

Five Brothers

GUITAR PART FOR E \flat INSTRUMENTS

TRANSCRIBED BY PEDRO BELLORA

COMPOSED BY GERRY MULLIGAN

$\text{♩} = 240$

A (A1)



B (A2)



C (B)



D (A3)



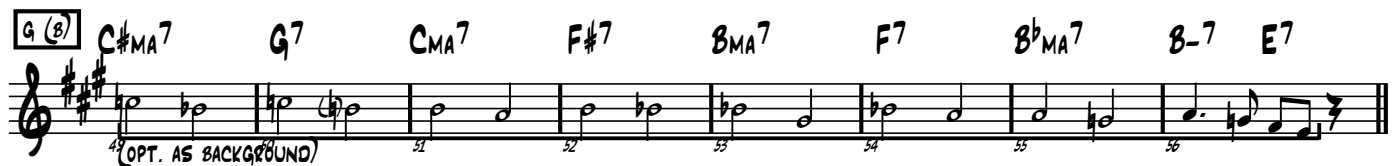
E (A1)



F (A2)



G (B)



H (A3)



M (A1) A^{MA}7 B-7 E7 A^{MA}7 B-7 E7 A7 E^b7 D-7 G7 A^{MA}7 B-7 E7

97 (GTR+BARI SOLO) 99 100 101 102 103 104

N (A2) A^{MA}7 B-7 E7 A^{MA}7 B-7 E7 A7 E^b7 D-7 G7 A^{MA}7 B-7 E7

105 106 107 108 109 110 111 112

O (B) C^{#MA}7 G7 C^{MA}7 F[#]7 B^{MA}7 F7 B^{bMA}7 B-7 E7

113 114 115 116 117 118 119 120

P (A3) A^{MA}7 B-7 E7 A^{MA}7 B-7 E7 A7 E^b7 D-7 G7 A^{MA}7 B-7 E7

121 122 123 124 125 126 127 128

Q (A1)

129 130 131 132 133

R (A2)

134 135 136 137 138 139

S (B)

140 141 142 143 144 145

146 147 148 149 150 151

T (A3)

152 153 154 155 156

(DRUMS CUE, DON'T PLAY)

157 158 159 160

(DRUMS CUE, DON'T PLAY)

161 162 163 164

POCO RALL.