

GUITAR PART FOR B \flat INSTRUMENTS

Walkin' Shoes

TRANSCRIBED BY PEDRO BELLORA

COMPOSED BY GERRY MULLIGAN

$\text{♩} = 130$

(DRUM HIT)

A (A1)

Musical notation for section A (A1), measures 1 through 9. The key signature is three sharps (F#, C#, G#) and the time signature is 4/4. The notation includes a drum hit at measure 1, indicated by a downward arrow. Measures 1-5 are on the first staff, and measures 6-9 are on the second staff. Fingerings are indicated by numbers 1 through 5. Accents are placed over notes in measures 2, 3, 4, 6, 7, 8, and 9.

B (A2)

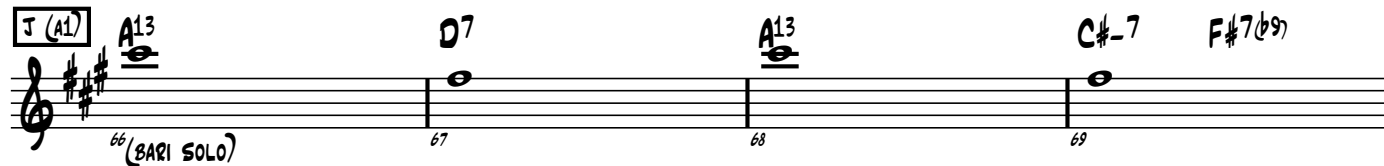
Musical notation for section B (A2), measures 10 through 17. The key signature is three sharps (F#, C#, G#) and the time signature is 4/4. Measures 10-13 are on the first staff, and measures 14-17 are on the second staff. Fingerings are indicated by numbers 10 through 13. Accents are placed over notes in measures 10, 11, 12, 14, 15, 16, and 17.

C (B)

Musical notation for section C (B), measures 18 through 25. The key signature is three sharps (F#, C#, G#) and the time signature is 4/4. Measures 18-21 are on the first staff, and measures 22-25 are on the second staff. Fingerings are indicated by numbers 18 through 21. Accents are placed over notes in measures 18, 19, 20, 21, 22, 23, 24, and 25.

D (A3)

Musical notation for section D (A3), measures 26 through 33. The key signature is three sharps (F#, C#, G#) and the time signature is 4/4. Measures 26-29 are on the first staff, and measures 30-33 are on the second staff. Fingerings are indicated by numbers 26 through 29. Accents are placed over notes in measures 26, 27, 28, 29, 30, 31, 32, and 33. A guitar solo is indicated by a bracket over measures 32 and 33.

E (A1)**F (A2)****G (B)****I (A3)****J (A1)**

K (A2)

74 75 76 77

78 79 80 81 (TO WRITTEN LINE...)

L (C)

82 83 84 85

86 87 88 89

M (A3)

90 91 92 93

94 95 96 97

N (CODA)

98 99 100 101

102 103 104 105 106